

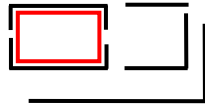
# MASS MoCA

## Jenny Holzer

On view September 20, 2019

### Checklist for Indoor Works

*All works courtesy the artist*



#### West Gallery

*Inflammatory Walls*, 1979–82

Offset posters on colored paper

Text: *Inflammatory Essays*, 1979–82

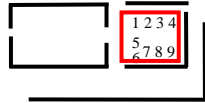
*Ribs*, 2010

11 double-sided, curved LED signs: red & blue

diodes front; blue & white diodes back, stainless steel housing

*Barricade*, 2004

LED sign: blue diodes, stainless steel housing



#### East Gallery

*Truism Walls*, 1977-79

Offset posters on white paper

Text: *Truisms*, 1977-79

#### North side of gallery:

Vitrine 1: Objects including styrofoam cups printed with **texts from *Truisms***, Golf balls with texts from *Truisms*, bumper sticker, wood and cardboard postcards, floppy discs with *Lustmord* screensavers, pencils, stickers, temporary tattoo set, *Beyond the Streets* poster with Lady Pink, “You have to make thousands of precise” painted sign sample, ARTEXTREME Spring/Summer 1986, Art in America New York Gallery pamphlet January 1990, Centro Cultural Banco do Brasil 1999 announcement, Sign on a truck postcard

Vitrine 2: Objects including *Lustmord* puzzles, leather box, human bones, silver bands, silver rings, silver bracelets, book with bookplate with text from *Truisms*

Vitrine 3: Clothing including t-shirts, hats, baby onesie, shoes, and photographs of Joseph Blough and Nirvana

Vitrine 4: Preparatory drawing for stone *Living* bench, skateboards, and photographs of stone benches installed in Doris C. Freedman Plaza, New York (1989)

# MASS MoCA

## **South side of gallery:**

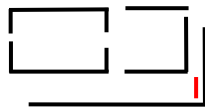
Vitrine 5: Condoms printed with *Truisms* and words from *Leaves of Grass* by Walt Whitman

Vitrine 6: Copies of *Süddeutsche Zeitung Magazin*, No. 46 (November 19, 1993)

Vitrine 7: Blankets, dishes, and spoons

Vitrine 8: Drawings for and photographs of UNEX signs (1983)

Vitrine 9: Rolls of film and photographs of Xenon projections



## **South Hall, End Wall**

All texts: *Survival*, 1983-85

*Survival: When you expect fair play...*, c. 1983  
Silver & black enamel on kraft paper

*Survival: What effect does it have...*, c. 1983  
Red enamel on kraft paper

*Survival: It's popular now to light...*, c. 1983  
Black enamel on kraft paper

*Survival: Outer space is where your...*, c. 1983  
Black enamel on kraft paper

*Survival: Prolong the pleasure so you...*, c. 1983  
Black enamel on kraft paper bag

*Survival: Something in your personality keeps...*, c. 1983  
Black enamel on kraft paper

*Survival: Tear ducts seem to be...*, c. 1983  
Turquoise enamel on kraft paper

*Survival: The breakdown comes when you...*, c. 1983  
Black, silver, & red enamel on heavy gauge kraft paper

*Survival: Die fast and quiet when...* c. 1983  
Silver & black enamel on kraft paper

# MASS MoCA



## South Hall, West Wall

Works are listed left to right

All texts: *Living*, 1980-82

### Top Row

*Living: More than once I've awakened with tears...*, 1981

Hand-painted enamel on metal sign: black on white

*Living: The rich knifing victim can flip...*, 1981

Hand-painted enamel on metal sign: red on white

*Living: When someone is breathing on you...*, 1981

Hand-painted enamel on metal sign: black on white

*Living: Hands-on socialization promotes...*, 1981

Hand-painted enamel on metal sign: black on white

*Living: Going where you're not supposed to...*, 1981

Hand-painted enamel on metal sign: black on white

*Living: There are places that are scarred...*, 1981

Hand-painted enamel on metal sign: red on white

*Living: The fond old couple was disappearing...*, 1981

Hand-painted enamel on metal sign: black on white

*Living: There's the sensation of a lot of flesh...*, 1981

Hand-painted enamel on metal sign: black on white

*Living: Chris is living in Gene's station wagon...*, 1981

Hand-painted enamel on metal sign: red on white

*Living: Usually you come out with stuff on you...*, 1981

Hand-painted enamel on metal sign: black on white

*Living: When you sit in the cold, you can feel...*, 1981

Hand-painted enamel on metal sign: black on white

*Living: When your flesh stops resembling you...*, 1981

Hand-painted enamel on metal sign: black on white

*Living: Somebody just robbed a stereo store...*, 1981

Hand-painted enamel on metal sign: black on white

# MASS MoCA

*Living: The smallest thing can make somebody...*, 1981  
Hand-painted enamel on metal sign: red on white

*Living: With bleeding inside the head...*, 1981  
Hand-painted enamel on metal sign: black on white

## **Bottom Row**

*Living: U.S. motels are hot investment...*, 1981  
Hand-painted enamel on metal sign: black on white

*Living: When one leg is shorter than the other...*, 1981  
Hand-painted enamel on metal sign: black on white

*Living: When you've been someplace...*, 1981  
Hand-painted enamel on metal sign: black on white

*Living: Just one rotten spot in your head...* 1981  
Hand-painted enamel on metal sign: red on white

*Living: If someone is wild, punishment...*, 1981  
Hand-painted enamel on metal sign: black on white

*Living: Exercise breaks at strategic points...*, 1981  
Hand-painted enamel on metal sign: black on white

*Living: Little Queenie...*, 1981  
Hand-painted enamel on metal sign: black on white

*Living: Effigies let you study or act...*, 1981  
Hand-painted enamel on metal sign: black on white

*Living: Sometimes you have no other choice...*, 1981  
Hand-painted enamel on metal sign: black on white

*Living: If things were a little different...*, 1981  
Hand-painted enamel on metal sign: red on white

*Living: Don't think that most acquaintances...*, 1981  
Hand-painted enamel on metal sign: black on white

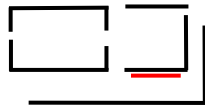
*Living: Gifted children, those with an IQ...*, 1981  
Hand-painted enamel on metal sign: black on white

*Living: Some days you wake and immediately...*, 1981  
Hand-painted enamel on metal sign: black on white

# MASS MoCA

*Living: You can make yourself enter somewhere...*, 1981  
Hand-painted enamel on metal sign: black on white

*Living: When you get older, your skin starts...*, 1981  
Hand-painted enamel on metal sign: black on white



## **South Hall, East Wall**

Works are listed left to right

All texts: *Living*, 1980-82

### **Top Row**

*Living: There's no reason to sleep curled up...*, 1981  
Hand-painted enamel on metal sign: black on white

*Living: If your clothes catch on fire...*, 1981  
Hand-painted enamel on metal sign: black on white

*Living: Many dogs run wild in the city...*, 1981  
Hand-painted enamel on metal sign: red on white

*Living: A man from a remote area...*, 1981  
Hand-painted enamel on metal sign: black on white

*Living: A hillside you're familiar with...*, 1981  
Hand-painted enamel on metal sign: black on white

*Living: If you were a good child...*, 1981  
Hand-painted enamel on metal sign: black on white

*Living: You wonder if the pain in the side...*, 1981  
Hand-painted enamel on metal sign: black on white

*Living: It makes a difference with whom you're intimate...*, 1981  
Hand-painted enamel on metal sign: black on white

*Living: It's scary when the veins are so close...*, 1981  
Hand-painted enamel on metal sign: black on white

*Living: You learn the hard way to keep a finger...*, 1981  
Hand-painted enamel on metal sign: black on white

*Living: Affluent college-bound students...*, 1981  
Hand-painted enamel on metal sign: black on white

# MASS MoCA

## Bottom Row

*Living: Just when the bug gets ready to land...*, 1981

Hand-painted enamel on metal sign: black on white

*Living Series: It's no fun watching people wound themselves...*, 1981

Hand-painted enamel on metal sign: black on white

*Living: It's nice when you decide you like someone...*, 1981

Hand-painted enamel on metal sign: black on white

*Living: It is hard to know what people want...*, 1981

Hand-painted enamel on metal sign: black on white

*Living: Tunneling is good for transportation...*, 1981

Hand-painted enamel on metal sign: red on white

*Living: People like to breed animals...*, 1981

Hand-painted enamel on metal sign: red on white

*Living: There is a terrible phase when abused...*, 1981

Hand-painted enamel on metal sign: black on white

*Living: You realize that you're always shedding...*, 1981

Hand-painted enamel on metal sign: black on white

*Living: You can watch people align themselves...*, 1981

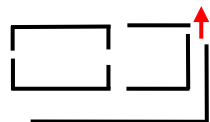
Hand-painted enamel on metal sign: red on white

*Living: If you wish to live anonymously...*, 1981

Hand-painted enamel on metal sign: black on white

*Living: It's easy for you to feel betrayed...*, 1981

Hand-painted enamel on metal sign: black on white



**Light Well**

*Truisms: A lot of professionals are crackpots...*, 2001

Danby Imperial marble bench

Text: *Truisms*, 1977-79

*Truisms: A single event...*, 1997

Danby Imperial marble bench

Text: *Truisms*, 1977-79