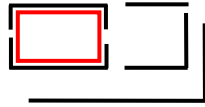


MASS MoCA

Jenny Holzer

Checklist for Indoor Works

All works courtesy the artist



West Gallery

Inflammatory Walls, 1979–82

Offset posters on colored paper

Text: *Inflammatory Essays*, 1979–82

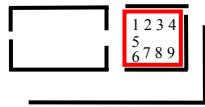
Ribs, 2010

11 double-sided, curved LED signs: red & blue

diodes front; blue & white diodes back, stainless steel housing

Barricade, 2004

LED sign: blue diodes, stainless steel housing



East Gallery

Truism Walls, 1977-79

Offset posters on white paper

Text: *Truisms*, 1977-79

North side of gallery:

Vitrine 1: Objects including styrofoam cups printed with texts from *Truisms*, Golf balls with texts from *Truisms*, bumper sticker, wood and cardboard postcards, floppy discs with *Lustmord* screensavers, pencils, stickers, temporary tattoo set, *Beyond the Streets* poster with Lady Pink, “You have to make thousands of precise” painted sign sample, ARTEXTREME Spring/Summer 1986, Art in America New York Gallery pamphlet January 1990, Centro Cultural Banco do Brasil 1999 announcement, Sign on a truck postcard

Vitrine 2: Objects including *Lustmord* puzzles, leather box, human bones, silver bands, silver rings, silver bracelets, book with bookplate with text from *Truisms*

Vitrine 3: Clothing including t-shirts, hats, baby onesie, shoes, facemask and photograph of Nirvana

Vitrine 4: Preparatory drawing for stone Living bench, skateboards, and photographs of stone benches installed in Doris C. Freedman Plaza, New York (1989)

MASS MoCA

South side of gallery:

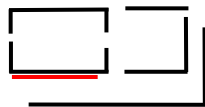
Vitrine 5: Condoms printed with *Truisms* and words from *Leaves of Grass* by Walt Whitman

Vitrine 6: Copies of *Süddeutsche Zeitung Magazin*, No. 46 (November 19, 1993)

Vitrine 7: Blankets, dishes, and spoons

Vitrine 8: IT IS GUNS, EXPOSE, PROTECT & WASH, and YOU VOTE photographs (2018-2019, 2020)

Vitrine 9: LET ME STAND bandanas and IN MEMORIAM projection photographs (2020)



South Hall, West Wall

Works are listed left to right

All texts: *Living*, 1980-82

Top Row

Living: More than once I've awakened with tears..., 1981

Hand-painted enamel on metal sign: black on white

Living: The rich knifing victim can flip..., 1981

Hand-painted enamel on metal sign: red on white

Living: When someone is breathing on you..., 1981

Hand-painted enamel on metal sign: black on white

Living: Hands-on socialization promotes..., 1981

Hand-painted enamel on metal sign: black on white

Living: Going where you're not supposed to..., 1981

Hand-painted enamel on metal sign: black on white

Living: There are places that are scarred..., 1981

Hand-painted enamel on metal sign: red on white

Living: The fond old couple was disappearing..., 1981

Hand-painted enamel on metal sign: black on white

Living: There's the sensation of a lot of flesh..., 1981

Hand-painted enamel on metal sign: black on white

Living: Chris is living in Gene's station wagon..., 1981

Hand-painted enamel on metal sign: red on white

Living: Usually you come out with stuff on you..., 1981

Hand-painted enamel on metal sign: black on white

MASS MoCA

Living: When you sit in the cold, you can feel...., 1981
Hand-painted enamel on metal sign: black on white

Living: When your flesh stops resembling you...., 1981
Hand-painted enamel on metal sign: black on white

Living: Somebody just robbed a stereo store...., 1981
Hand-painted enamel on metal sign: black on white

Living: The smallest thing can make somebody...., 1981
Hand-painted enamel on metal sign: red on white

Living: With bleeding inside the head...., 1981
Hand-painted enamel on metal sign: black on white

Bottom Row

Living: U.S. motels are hot investment...., 1981
Hand-painted enamel on metal sign: black on white

Living: When one leg is shorter than the other...., 1981
Hand-painted enamel on metal sign: black on white

Living: When you've been someplace...., 1981
Hand-painted enamel on metal sign: black on white

Living: Just one rotten spot in your head... 1981
Hand-painted enamel on metal sign: red on white

Living: If someone is wild, punishment...., 1981
Hand-painted enamel on metal sign: black on white

Living: Exercise breaks at strategic points...., 1981
Hand-painted enamel on metal sign: black on white

Living: Little Queenie...., 1981
Hand-painted enamel on metal sign: black on white

Living: Effigies let you study or act...., 1981
Hand-painted enamel on metal sign: black on white

Living: Sometimes you have no other choice...., 1981
Hand-painted enamel on metal sign: black on white

Living: If things were a little different...., 1981
Hand-painted enamel on metal sign: red on white

MASS MoCA

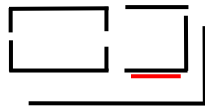
Living: Don't think that most acquaintances..., 1981
Hand-painted enamel on metal sign: black on white

Living: Gifted children, those with an IQ..., 1981
Hand-painted enamel on metal sign: black on white

Living: Some days you wake and immediately..., 1981
Hand-painted enamel on metal sign: black on white

Living: You can make yourself enter somewhere..., 1981
Hand-painted enamel on metal sign: black on white

Living: When you get older, your skin starts..., 1981
Hand-painted enamel on metal sign: black on white



South Hall, East Wall

Works are listed left to right

All texts: *Living*, 1980-82

Top Row

Living: There's no reason to sleep curled up..., 1981
Hand-painted enamel on metal sign: black on white

Living: If your clothes catch on fire..., 1981
Hand-painted enamel on metal sign: black on white

Living: Many dogs run wild in the city..., 1981
Hand-painted enamel on metal sign: red on white

Living: A man from a remote area..., 1981
Hand-painted enamel on metal sign: black on white

Living: A hillside you're familiar with..., 1981
Hand-painted enamel on metal sign: black on white

Living: If you were a good child..., 1981
Hand-painted enamel on metal sign: black on white

Living: You wonder if the pain in the side..., 1981
Hand-painted enamel on metal sign: black on white

Living: It makes a difference with whom you're intimate..., 1981
Hand-painted enamel on metal sign: black on white

MASS MoCA

Living: It's scary when the veins are so close..., 1981
Hand-painted enamel on metal sign: black on white

Living: You learn the hard way to keep a finger..., 1981
Hand-painted enamel on metal sign: black on white

Living: Affluent college-bound students..., 1981
Hand-painted enamel on metal sign: black on white

Bottom Row

Living: Just when the bug gets ready to land..., 1981
Hand-painted enamel on metal sign: black on white

Living Series: It's no fun watching people wound themselves..., 1981
Hand-painted enamel on metal sign: black on white

Living: It's nice when you decide you like someone..., 1981
Hand-painted enamel on metal sign: black on white

Living: It is hard to know what people want..., 1981
Hand-painted enamel on metal sign: black on white

Living: Tunneling is good for transportation..., 1981
Hand-painted enamel on metal sign: red on white

Living: People like to breed animals..., 1981
Hand-painted enamel on metal sign: red on white

Living: There is a terrible phase when abused..., 1981
Hand-painted enamel on metal sign: black on white

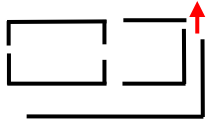
Living: You realize that you're always shedding..., 1981
Hand-painted enamel on metal sign: black on white

Living: You can watch people align themselves..., 1981
Hand-painted enamel on metal sign: red on white

Living: If you wish to live anonymously..., 1981
Hand-painted enamel on metal sign: black on white

Living: It's easy for you to feel betrayed..., 1981
Hand-painted enamel on metal sign: black on white

MASS MoCA



Light Well

Truisms: A lot of professionals are crackpots..., 2001

Danby Imperial marble bench

Text: *Truisms*, 1977-79

Truisms: A single event..., 1997

Danby Imperial marble bench

Text: *Truisms*, 1977-79